



# SULPHATES

## “A CHARACTERISTIC STUDY”

-Dr. Divya Mehul Bhatt, MD (HOM)

# What are SULPHATES?

- The sulfate or sulphate ion is polyatomic anion with the empirical formula  $\text{SO}_4^{2-}$ . Sulfates are salts of sulphuric acid and many are prepared from that acid.
- Sulfur, also spelled as sulphur, is a very important element in today's world.
- Its most important use is in the manufacture of Sulfuric acid ( $\text{H}_2\text{SO}_4$ ).
- Sulphur belongs to the chalcogen family. The term chalcogen comes from two Greek words meaning "ore forming." An ore is a naturally occurring mineral used as a source for an element.

# SULPHUR / SULFUR

**This element makes up Group 16 (VIA) of  
the  
periodic table**

**16**

**S**

**Sulfur**

**32.06**



# Occurrence in NATURE

**Sulfur is released from volcanoes as a gas. When it reaches the cold air, it changes back to a solid. It**



# PHYSICAL PROPERTIES

- Sulfur was known to ancient peoples. Its physical and chemical properties are very distinctive.
- It often occurs as a brilliant yellow powder.
- When it burns, it produces a blue flame and a very strong odor.
- Sulfur exists in two allotropic forms. Allotropes are forms of an element with different physical and chemical properties.
- The two forms of sulfur are known as  $\alpha$  form





# CHEMICAL PROPERTIES

- Sulfur's most prominent chemical property is that it burns. When it does so, it gives off a pale blue flame and sulfur dioxide ( $\text{SO}_2$ ) gas. Sulfur dioxide has a very obvious strong, choking odor.



- Sulfur sometimes occurs in bright yellow layers on the top of the earth. It has a sharp, offensive odor.

# HEALTH EFFECTS (PHYSICAL FORM)

- The cleansing power of sulfur has been known for many centuries. At one time, ancient physicians burned sulfur in a house to cleanse it of impurities. Creams made with sulfur were used to treat rashes and diseases.




- washed sulfur is sulfur treated with ammonia water. Washed sulfur is used to kill parasites

# HEALTH EFFECTS (AS A NUTRIENT)

- Sulfur is a macronutrient for both plants and animals.
- Sulfur is used to make proteins and nucleic acids, such as DNA. It also occurs in many essential enzymes.
- A person who does not get enough sulfur in his or her diet develops certain health problems. These include itchy and flaking skin and improper development of hair and nails.
- Plants require sulfur for normal growth and development.



A daisy flower with a yellow center and white petals is in the upper left. A wooden spoon filled with white homeopathic pills is in the center. Three more white pills are scattered on the textured surface in the foreground. The text is overlaid in the center.

# ACTION of SULPHATE GROUP IN HOMOEOPATHIC POTENCY

# CONSTITUTION

**Lean, thin and dirty looking person**





# PREDOMINANT MIASM

**PSORA (+3)**  
**TUBERCULAR (+2)**





**IRRITABLE**

**MIND**

**HYPERSENSITIVE**



**Destructive**



**HYPERACTIVE**

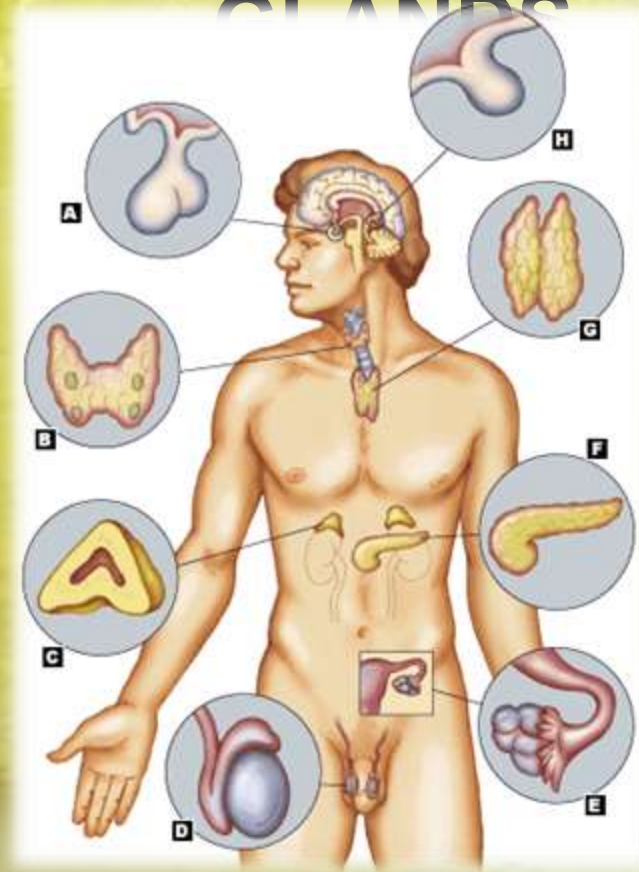
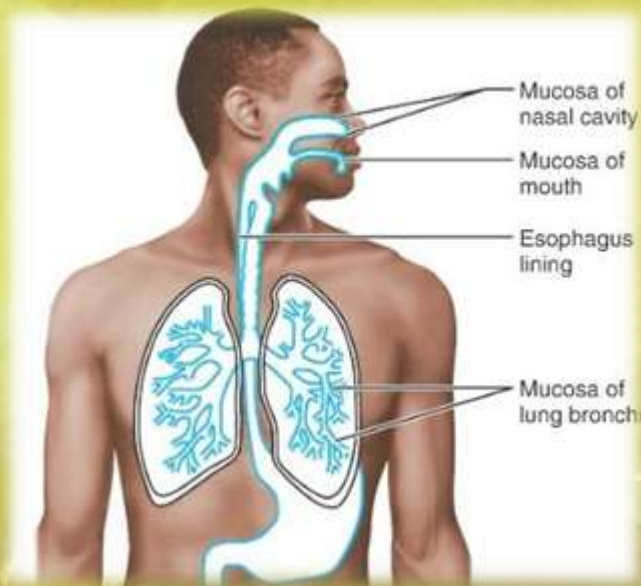
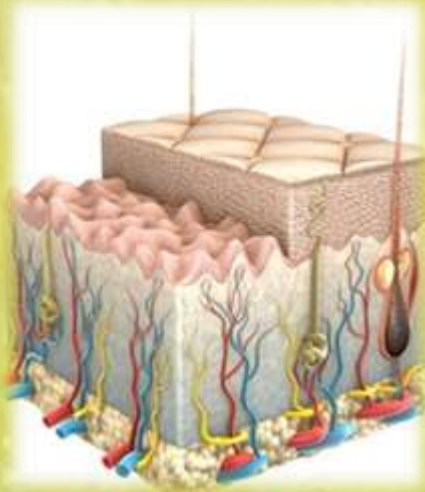


**JEALOUSY**



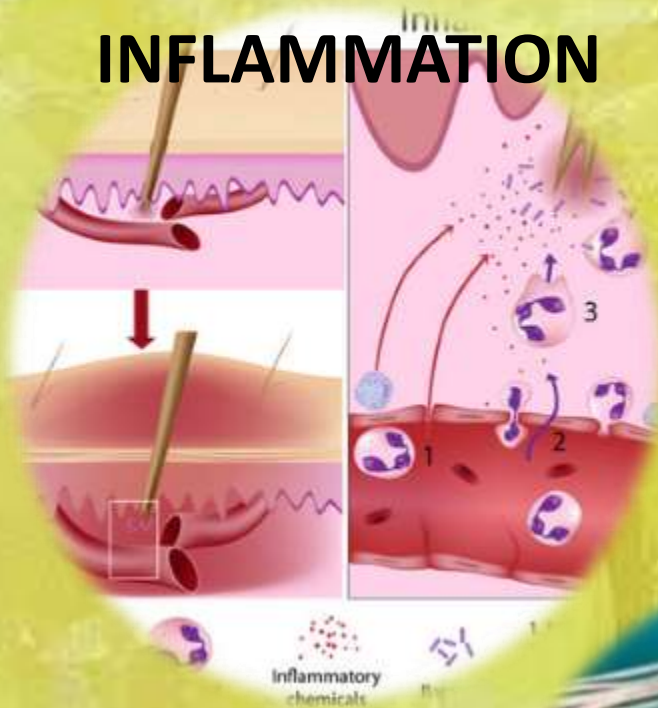
# SPHERE OF ACTION

**HIGH AFFINITY FOR SKIN, MUCOUS  
MEMBRANE,  
GLANDS**

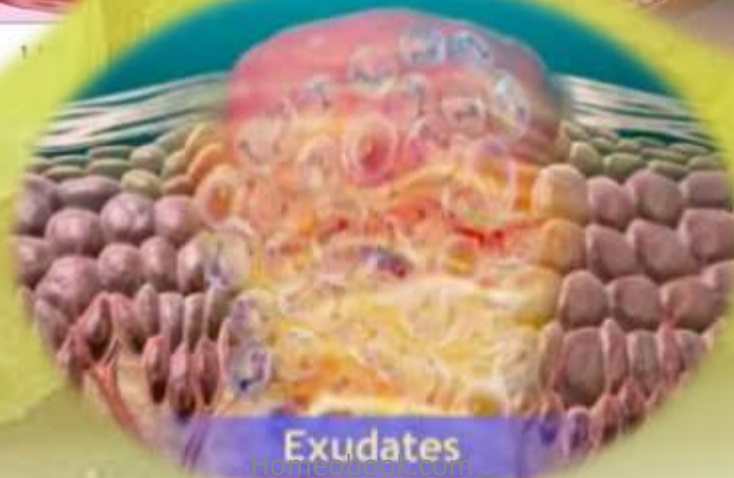


# RESULTING IN

## INFLAMMATION



## SUPPURATION



Exudates



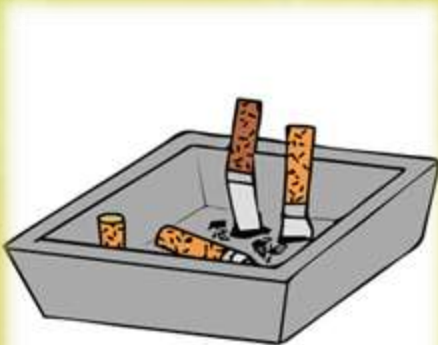
# CHARACTERISTICS

**DRYNESS, ACRIDITY, BURNING  
(MARKED BURNING OF PALMS AND  
SOLES)**



# CRAVING

## STIMULANTS





# DISCHARGES



**Corrosive**



**PROFUSE**



**ACRID**

**OFFENSIVE**



**SOUR**



# MODALITIES

**AGGRAVATION**  
**AMELIORATION**

**MORNING**



**OPEN AIR**





# HOMOEOPATHIC REMEDIES

## LIST

### HOT REMEDIES

- Antimonium crudum antimony
- Antimonium sulphuratum auratum antimony
- Arsenicum sulphuratum flavum arsenic
- Cadmium sulphuratum cadmic sulphate
- Calcareo sulfurica sulphate of calcium
- Chininum sulfuricum sulphate of quinine
- Cinnabaris sulphide of mercury



# HOMOEOPATHIC REMEDIES LIST



## HOT REMEDIES

- **Kalium sulfuricum** sulphate of potassium
- **Magnesia sulfurica** sulphate of magnesium
- **Mercurius sulphuricus** yellow sulphate of mercury
- **Natrum Sulphuricum** sulphate of sodium
- **Niccolum sulphuricum** sulphate of nickel
- **Sulphuricum acidum** sulphuric Acid



# HOMOEOPATHIC REMEDIES LIST

## HOT REMEDIES

- Sulphur iodatum Iodide of Sulphur
- Sulphurosum acidum Sulphurous Acid;  
H<sub>2</sub> S O<sub>3</sub>
- Sulphur Sulfur brimstone

## CHILLY REMEDY

- Hepar sulfur

Calcium sulphide



# REFERENCES

- <https://en.wikipedia.org/wiki/Sulfate>
- <http://www.encyclopedia.com/topic/sulfur.aspx>
- **Boericke's New Manual of Homeopathic Materia Medica with Repertory**
- **Farrington's Clinical Materia Medica**
- **Perceiving (Groups) by Dr. Arvind Jain**



A large, rough, yellowish-gold rock, possibly a piece of raw gold or a mineral specimen, is the central focus. The rock has a crystalline, fractured texture. Engraved on its surface in a bold, serif, metallic font are the words "THANK" and "YOU" stacked vertically. The letters have a 3D, embossed appearance with a gold and silver color scheme and a slight shadow effect.

THANK  
YOU